



ACE
Engineering Academy
(India's leading institute for IES/GATE/PSUs)

**Result Oriented Coaching For
IES | GATE | PSUs**

GATE 2016

**Detailed Solutions For
Electronics & Communication Engg.**

**Date: 31-01-2016
Forenoon Session**

www.aceenggacademy.com [E-mail : aceacademy95@gmail.com](mailto:aceacademy95@gmail.com) [facebook.com/aceacademy](https://www.facebook.com/aceacademy)

Ph: 040-23234418 / 19 / 20



Q.1 – Q.5 Carry one mark each

01. Based on the given statements, select the appropriate option with respect to grammar a statements.

- (i) The height of Mr. X is 6 feet. (ii) The height of Mr. Y is 5 feet
- (A) Mr. X is longer than Mr. Y
 (B) Mr. X is more elongated than Mr. Y
 (C) Mr. X is taller than Mr. Y
 (D) Mr. X is lengthier than Mr. Y

01. Ans: (C)

Sol: In degrees of comparison Mr. X is taller than Mr. Y is apt.

- Positive degree – tall
 Comparative degree – taller
 Superlative degree – tallest

02. The students _____ the teachers on teachers' day for twenty years of dedicated teaching.

- (A) facilitated (B) felicitated (C) fantasized (D) facilitated

02. Ans: (B)

Sol: Felicitate means honour.

03. After India's cricket world cup victory in 1985, Shrotria who was playing both tennis and cricket till then, decided to concentrate only on cricket. And the rest is history.

What does the underlined phrase mean in this context?

- (A) history will rest in peace (B) rest is recorded in history books
 (C) rest is well known (D) rest is archaic

03. Ans: (C)

Sol: 'rest is history' is an idiomatic expression which means 'rest is well known'

04. Given $(9 \text{ inches})^{1/2} = (0.25 \text{ yards})^{1/2}$, which one of the following statements is TRUE?

- (A) 3 inches = 0.5 yards (B) 9 inches = 1.5 yards
 (C) 9 inches = 0.25 yards (D) 81 inches = 0.0625 yards

04. Ans: (C)

Sol: Given $(9 \text{ inches})^{1/2} = (0.25 \text{ yards})^{1/2}$
 $9 \text{ inches} = 0.25 \text{ yards}$

05. S, M, E and F are working in shifts in a term to finish a project. M works with twice the efficiency of other but for half as many days as E worked. S and M have 6 hour shifts in a day, whereas E and F have 12 hours shifts. What is the ratio of contribution of M to contribution of E in the project?

- (A) 1:1 (B) 1:2 (C) 1:4 (D) 2:1

05. Ans: (B)

Sol: M efficiency = 2 [efficiency of S,E, and F]

Contribution of M in the project = x days × 6 hrs × 2

Contribution of E in the project = 2x days × 12 hrs × 1

Contribution of M : Contribution of E

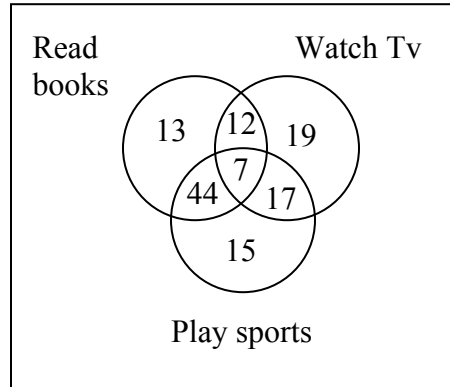
$$x \times 6 \times 2 : 2x \times 12 \times 1$$

$$1 : 2$$



Q.6 – Q.10 Carry two marks each

06. The Venn diagram shows the preference of the student population for leisure activities.



From the data given, the number of students who like to read books or play sports is _____.

- (A) 44 (B) 51
(C) 79 (D) 108

06. Ans: (D)

Sol: Read books = $n(R) = 12 + 44 + 7 + 13$
 $= 76$

Play sports = $n(S) = 44 + 7 + 17 + 15$
 $= 83$

$n(R \cap S) = 44 + 7$
 $= 51$

$n(R \cup S) = n(R) + n(S) - n(R \cap S)$
 $= 76 + 83 - 51$
 $= 108$

07. Social science disciplines were in existence in an amorphous form until the colonial period when they were institutionalized. In varying degrees, they were intended to further the colonial interest. In the time of globalization and the economic rise of postcolonial countries like India, conventional ways of knowledge production have become obsolete.

Which of the following can be logically inferred from the above statements?

- (i) Social science disciplines have become obsolete.
(ii) Social science disciplines had a pre-colonial origin
(iii) Social science disciplines always promote colonialism
(iv) Social science must maintain disciplinary boundaries
(A) (ii) only (B) (i) and (iii) only
(C) (ii) and (iv) only (D) (iii) and (iv) only

07. Ans: (A)

Sol: Until the colonial period means pre-colonial origin. Other options can't be inferred.

Awards | Merit Certificates For Toppers in GATE 2016



AIR 2

₹ 2,01,116
& Pure Gold Medal

AIR 3

₹ 1,01,116
& Pure Gold Medal

AIR 4-5

₹ 50,116
& Pure Gold Medal

AIR 6-10

₹ 25,116
& Pure Gold Medal

AIR 11-50

₹ 10,116
& Silver Medal

AIR 51-100

₹ 5,116
& Silver Medal

**Win a Car or get
equivalent cash**

All the current and previous students who have taken guidance from us in Class room coaching/
postal coaching/ Test Series, etc. are eligible for the above awards.

Please inform your result and avail free guidance for interviews and counselling for M.Tech/PSUs.



$$\sin 45^\circ = \frac{EN}{4}$$

$$EN = \sin 45^\circ \times 4 = 2.828 \text{ km}$$

$$CN = NE + CE = 2.828 + 5 = 7.828 \text{ km}$$

$$CB = AB - AC = 10 - 2.828 = 7.171 \text{ km}$$

$$(NB)^2 = (NC)^2 + (BC)^2 = (7.828)^2 + (7.171)^2$$

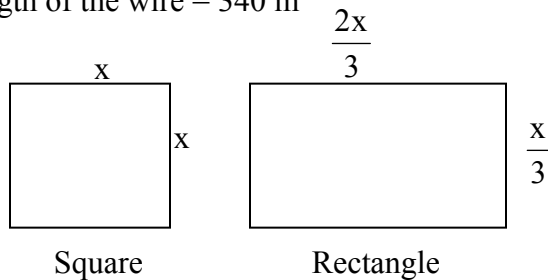
$$\therefore NB = \sqrt{(7.828)^2 + (7.171)^2} = 10.616 \text{ km}$$

$$\therefore NM = NB + BN = 10.616 + 10 = 20.61 \text{ km}$$

10. A wire of length 340 mm is to be cut into two parts. One of the parts is to be made into a square and the other into a rectangle where sides are in the ratio of 1:2. What is the length of the side of the square (in mm) such that the combined area of the square and the rectangle is a MINIMUM?
(A) 30 (B) 40 (C) 120 (D) 180

10. Ans: (B)

Sol: Length of the wire = 340 m



$$\text{Perimeter of rectangle} = 2 \left[\frac{x}{3} + \frac{2x}{3} \right] = 2x$$

$$\text{Perimeter of square} = 340 - 2x$$

$$\text{Side of square} = \frac{340 - 2x}{4}$$

Total area = Area of square + Area of rectangle

$$= \left[\frac{340 - 2x}{4} \right]^2 + \frac{x}{3} \times \frac{2x}{3} = \left[\frac{340 - 2x}{4} \right]^2 + \frac{2x^2}{9}$$

Combined area of square + rectangle = minimum

$$f'(x) = 0$$

$$f(x) = \left[\frac{340 - 2x}{4} \right]^2 + \frac{2}{9}x^2$$

$$f'(x) = \frac{4}{9}x^2 - \frac{340 - 2x}{4} = 0$$



$$\frac{4}{9}x^2 = \frac{1}{4}[340 - 2x]$$

$$= x = 90$$

$$\text{Side of square} = \frac{340 - 2x}{4} = 40 \text{ mm}$$

Another method:

Elimination procedure from alternatives option [C] and [D] are not possible because area may be maximum.

Option (A)

Side of the square = $x = 30$ mm

Perimeter of the square = $30 + 30 + 30 + 30 = 120$ mm

\therefore Perimeter of the rectangle = $340 - 120 = 220$ mm

$$2x + 2 \times 2x = 220$$

$$x = 37$$

$$2x = 37 \times 2 = 74$$

Area of square = $x^2 = (30)^2 = 900$

Area of rectangle = $x \times 2x = 37 \times 74 = 2738$

Total area = $900 + 2738 = 3638 \text{ mm}^2$

Option (B)

Side of the square = $x = 40$ mm

Perimeter of the square = $340 - 160 = 180$ mm

$$2x + 2 \times 2x = 180 \text{ mm}$$

$$6x = 180 \text{ mm}$$

$$x = 30 \text{ mm}$$

Area of the square = $40 \times 40 = 1600 \text{ mm}^2$

Area of the rectangle = $30 \times 2 \times 30 = 1800 \text{ mm}^2$

\therefore Total area = $1600 + 1800 = 3400 \text{ mm}^2$

$\therefore 3400 \text{ mm}^2 < 3638 \text{ mm}^2$

Option B is correct.

Q.1 – Q.25 Carry one mark each.

01. The value of x for which the matrix $A = \begin{bmatrix} 3 & 2 & 4 \\ 9 & 7 & 13 \\ -6 & -4 & -9 + x \end{bmatrix}$

has zero as an eigen value is _____

01. Ans: $x = 1$

Sol: For eigen value of A is to be zero, $\det(A) = 0$

$$3 \{(-63 + 7x) + 52\} - 2 \{(-81 + 9x) + 78\} + 4 \{-36 + 42\} = 0$$

$$\therefore x = 1$$



02. Consider the complex valued function $f(z) = 2z^3 + b |z|^3$ where z is a complex variable. The value of b for which the function $f(z)$ is analytic is _____

02. Ans: 0

Sol: $f(z) = 2z^3 + b |z|^3$

for $b = 0$, $f(z)$ becomes polynomial

so it is analytic every where only when $b = 0$

03. As x varies from -1 to 3 , which of the following describes the behaviour of the function $f(x) = x^3 - 3x^2 + 1$?

(A) $f(x)$ increases monotonically

(B) $f(x)$ increases, then decreases and increases again

(C) $f(x)$ decreases, then increases and decreases again

(D) $f(x)$ increases and then decreases

03. Ans: (B)

Sol: Since, $f(-1) = -3$, $f(0) = 1$, $f(1) = -1$,

$f(2) = -3$, $f(3) = 1$

04. How many distinct values of x satisfy the equation $\sin(x) = x/2$, where x is in radians?

(A) 1

(B) 2

(C) 3

(D) 4 or more

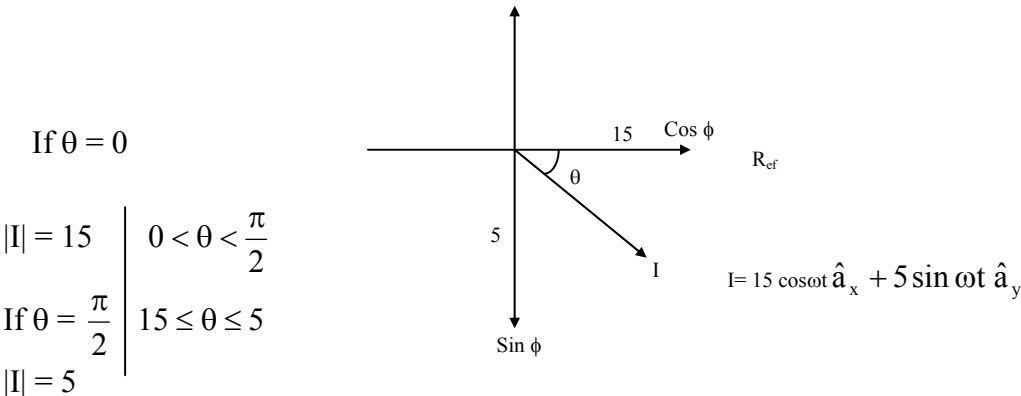
04. Ans: (C)

Sol: $\sin x = \frac{x}{2}$ touches at 3 points.

05. Consider the time-varying vector $I =$ in Cartesian coordinates, where $\omega > 0$ is a constant. When the vector magnitude $|I|$ is at its minimum value, the angle θ that I makes with the x axis (in degree, such that $0 \leq \theta \leq 180$) is _____

05. Ans: 90°

Sol:





ACE

Engineering Academy
(India's leading institute for IES/GATE/PSUs)

Hyderabad | Delhi | Bhopal | Pune | Bhubaneswar | Bengaluru | Lucknow | Patna | Chennai | Vijayawada | Visakhapatnam | Tirupati | Guntur

HEARTY CONGRATULATIONS TO OUR IES - 2015 TOPPERS

Total no.of selections in IES 2015 - EC : 52 EE : 36 CE : 24 ME : 28

01 EC IJAZ M YOUSUF	01 ME PRATAP SINGH	02 EE PARTHA SARATHI TRIPATHY	02 EC SAURABH PRATAP SINGH	02 CE PIYUSH PATIL	03 EE NIKKI BANSAL	03 EC SIDHARTH SABHARWAL	04 EC PIYUSH VIJAY
04 EE KAJA NAGA SAI HEMANTH	04 CE AMIT SHARMA	05 EE NAGENDRA TIWARI	05 CE DHIRAJ AGARWAL	05 EC MANAS PANDA	06 EE ANAS FEROZ	06 EC SIMON SAMUEL	07 EC PIYUSH PRABHAKAR KUMBHAR
07 EE AMAL SEBASTIAN	08 ME BANDI SREENIHAR	08 EE DHARMINI SACHIN	09 ME K. KRISHNA CHATANYA	09 EC SHRUTI KUSHWAMA	09 EE SUDHAKAR KUMAR	10 EE VISHAL RATHI	10 CE AISHWARYA ALOK

EC

ME

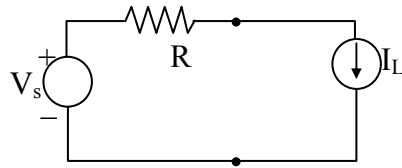
EE

CE

24 SELECTIONS IN TOP 10



06. In the circuit shown below, V_s is a constant voltage source and I_L is a constant current load



The value of I_L that maximizes the power absorbed by the constant current load is

- (A) $\frac{V_s}{4R}$ (B) $\frac{V_s}{2R}$ (C) $\frac{V_s}{R}$ (D) ∞

06. Ans: (B)

Sol: Maximum power delivered by the source to any load

$$\Rightarrow P_{\max} = \frac{V_s^2}{4R} \text{ (W)}$$

\Rightarrow Here power absorbed by the load

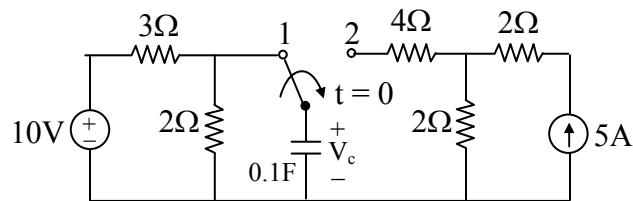
$$\begin{aligned} P_L &= v_L \cdot I_L \text{ (W)} \\ &= (V_s - I_L \cdot R) I_L \\ &= V_s \cdot I_L - I_L^2 \cdot R \text{ (W)} \end{aligned}$$

$$\text{If } I_L = \frac{V_s}{2R}$$

$$\Rightarrow P_L = v_s \cdot \frac{V_s}{2R} - \left(\frac{V_s}{2R}\right)^2 \cdot R = \frac{V_s^2}{2R} - \frac{V_s^2}{4R} \Rightarrow \frac{V_s^2}{4R} \text{ (W)}$$

$$P_L = P_{\max}$$

07. The switch has been in position 1 for a long time and abruptly changes to position 2 at $t = 0$



If time t is in seconds, the capacitor voltage V_C (in volts) for $t > 0$ given by

- (A) $4(1 - \exp(-t/0.5))$ (B) $10 - 6\exp(-t/0.5)$
(C) $4(1 - \exp(t/0.6))$ (D) $10 - 6\exp(-t/0.6)$

07. Ans: (D)

Sol: $v_c(0^-) = \left(\frac{10}{5}\right) \cdot 2 = 4\text{V} = v_c(0^+)$

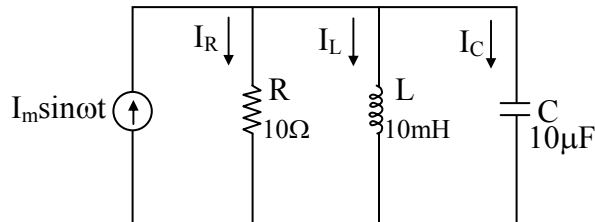
$$v_c(\infty) = 5 \times 2 = 10\text{V}$$

$$\tau = R_{eq} \cdot C = 6 \times 0.1 = 0.6\text{sec}$$

$$V_c(t) = 10 + (4 - 10)e^{-t/\tau} = 10 - 6e^{-\frac{t}{0.6}} \text{ V for } 0 \leq t \leq \infty$$



08. The figure shows an RLC circuit with a sinusoidal current source.



At resonance, the ratio $|I_L|/|I_R|$, i.e., the ratio of the magnitudes of the inductor current phasor and the resistor current phasor, is _____

08. Ans: 0.3163

Sol: At resonance, $I_R = I$

$$I_L = QI \angle -90^\circ \text{ A}$$

$$I_C = QI \angle 90^\circ \text{ A}$$

Where $Q = \omega_0 CR$

$$= R \sqrt{\frac{C}{L}} = 10 \sqrt{\frac{10 \times 10^{-6}}{10 \times 10^{-3}}}$$

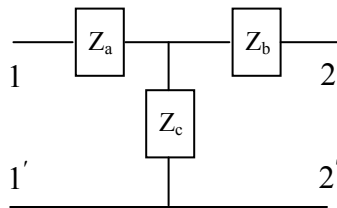
$$= \frac{1}{\sqrt{10}} = 0.3163$$

$$\text{So, } \frac{|I_L|}{|I_R|} = Q = 0.3163$$

09. The z-parameter matrix for the two-port network shown is

$$\begin{bmatrix} 2j\omega & j\omega \\ j\omega & 3 + 2j\omega \end{bmatrix}$$

Where the entries are in Ω . Suppose $Z_b(j\omega) = R_b + j\omega$



Then the value of R_b (in Ω) equals _____

09. Ans: 3

$$\text{Sol: } z(s) = \begin{bmatrix} 2s & s \\ s & 3 + 2s \end{bmatrix} = \begin{bmatrix} Z_A + Z_C & Z_C \\ Z_C & Z_B + Z_C \end{bmatrix}$$

Here, $Z_C = s$

And $Z_B + Z_C = 3 + 2s$

$$\Rightarrow Z_B + s = 3 + 2s$$

$$\Rightarrow Z_B = 3 + s \Rightarrow R_B + jX_B = 3 + j\omega \Rightarrow R_B = 3\Omega$$

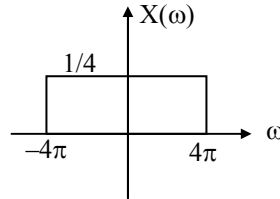


10. The energy of the signal $x(t) = \frac{\sin(4\pi t)}{4\pi t}$ is _____

10. **Ans: 0.25**

Sol: $\frac{\sin at}{\pi} \leftrightarrow \text{rect}\left(\frac{\omega}{2a}\right)$

$$X(\omega) = \frac{1}{4} \text{rect}\left(\frac{\omega}{8\pi}\right)$$



$$\begin{aligned} E_{x(t)} &= \frac{1}{2\pi} \int_{-\infty}^{\infty} |X(\omega)|^2 d\omega \\ &= \frac{1}{2\pi} \times \frac{1}{16} \times 8\pi \\ &= \frac{1}{4} = 0.25 \end{aligned}$$

11. The Ebers – Moll model of a BJT is valid
 (A) only in active mode
 (B) only in active and saturation modes
 (C) only in active and cut-off modes
 (D) in active, saturation and cut-off modes

11. **Ans: (A)**

12. A long-channel NMOS transistor is biased in the linear region $V_{DS} = 50$ mV and is used as a resistance. Which one of the following statements is NOT correct?
 (A) If the device width W is increased, the resistance decreases
 (B) If the threshold voltage is reduced, the resistance decrease
 (C) If the device length L is increased, the resistance increases
 (D) If V_{GS} is increased, the resistance increases

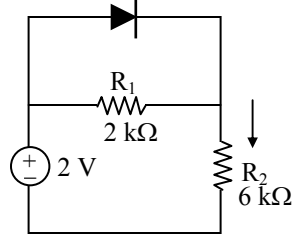
12. **Ans: (D)**

- Sol:** A. TRUE
 B. TRUE
 C. TRUE
 D. FALSE

$$r_{ds}(\text{on}) = \frac{1}{\mu_n \text{cox} \frac{W}{L} [V_{gs} - V_T]}$$



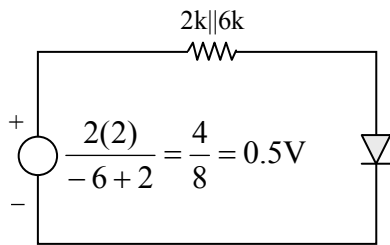
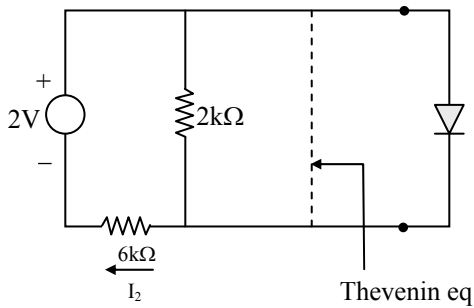
13. Assume that the diode in the figure has $V_{on} = 0.7 \text{ V}$, but is otherwise ideal.



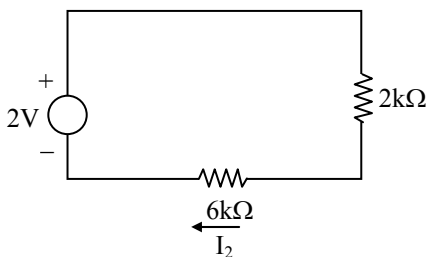
The magnitude of the current i_2 (in mA) is equal to _____

13. Ans: 0.25

Sol:



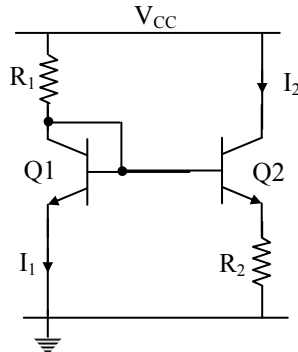
Diode needs at least 0.7V, with 0.5V at the terminals, the diode is OFF. Therefore the circuit reduces to



$$\begin{aligned}
 I_2 &= \frac{2}{2k + 6k} \\
 &= \frac{2}{8k} \\
 &= 0.25\text{mA}
 \end{aligned}$$



14. Resistor R_1 in the circuit below has been adjusted so that $I_1 = 1$ mA. The bipolar transistor Q1 and Q2 are perfectly matched and have very high current gain, so their base currents are negligible. The supply voltage V_{cc} is 6 V. The thermal voltage kT/q is 26 mV.



The value of R_2 (in Ω) for which $I_2 = 100 \mu\text{A}$ is _____

14. **Ans: 598.67**

Sol: $I_C = I_S e^{\frac{V_{be}}{V_t}}$

$$\therefore V_{be1} = V_t \ln \left[\frac{I_c}{I_s} \right] = V_t \ln \left[\frac{I_1}{I_s} \right]$$

$$V_{be2} = V_t \ln \left[\frac{I_2}{I_s} \right]$$

From the circuit

$$V_{be1} = V_{be2} + I_2 R_2 \text{ and } V_t = \frac{kT}{q} = 26\text{mV}$$

$$\therefore R_2 = \frac{V_{be1} - V_{be2}}{I_2} = \frac{V_t \ln \left[\frac{I_1}{I_2} \right]}{I_2} = \frac{26\text{mV} \ln \left[\frac{1\text{mA}}{100\mu\text{A}} \right]}{100 \mu\text{A}} = 598.67\Omega$$

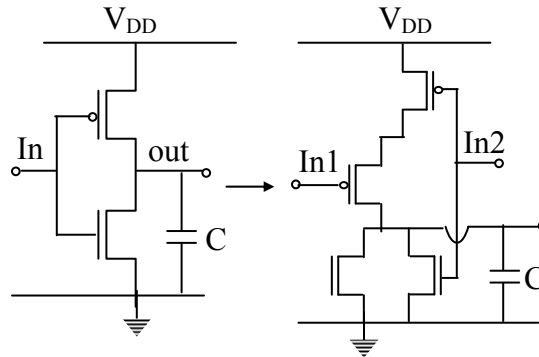
15. Which one of the following statements is correct about an ac-coupled common-emitter amplifier operating in the mid-band region?
- (A) The device parasitic capacitances behave like open circuits, whereas coupling and bypass capacitances behave like short circuits.
 - (B) The device parasitic capacitances, coupling capacitances and bypass capacitances behave like open circuits.
 - (C) The device parasitic capacitances, coupling capacitances and bypass capacitances behave like short circuits.
 - (D) The device parasitic capacitances behave like short circuits, whereas coupling and bypass capacitances behave like open circuits.

15. **Ans: (A)**

Sol: The parasitic capacitances are in PF and the coupling and bypass capacitors are in μF . Therefore for the mid frequency band, parasitic capacitance act like open circuits and coupling and bypass capacitances act like short circuits.



16. Transistor geometries in a CMOS inverter have been adjusted to meet the requirement for worst case charge and discharge times for driving a load capacitor C . This design is to be converted to that of a NOR circuit in the same technology, so that its worst case charge and discharge times while driving the same capacitor are similar. The channel length of all transistors are to be kept unchanged. Which one of the following statements is correct?

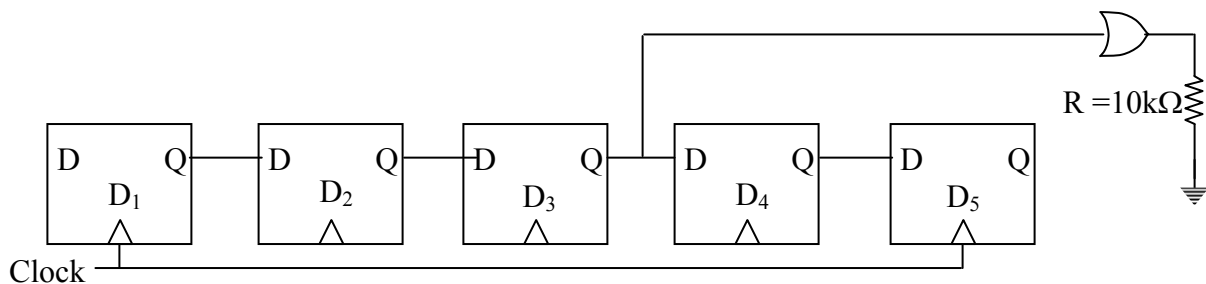


- (A) Widths of PMOS transistors should be doubled, while widths of NMOS transistors should be halved.
 (B) Widths of PMOS transistors should be doubled, while widths of NMOS transistors should not be changed.
 (C) Widths of PMOS transistors should be halved, while widths of NMOS transistors should not be changed.
 (D) Widths of PMOS transistors should be unchanged, while widths of NMOS transistors should be halved.

16. Ans: (B)

Sol: Width of PMOS transistors should be halved. while width of NMOS transistors should not be changed, because NMOS transistors are in parallel. If any one transistor ON, output goes to LOW.

17. Assume that all the digital gates in the circuit shown in the figure are ideal, the resistor $R = 10\text{ k}\Omega$ and the supply voltage is 5 V . The D flip-flops D_1, D_2, D_3, D_4 and D_5 are initialized with logic values, $0, 1, 0, 1$ and 0 , respectively. The clock has a 30% duty cycle.



The average power dissipated (in mW) in the resistor R is _____

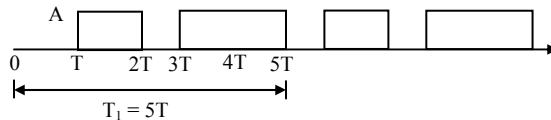


17. Ans: 1.5

Sol:

C/k	Q ₁	Q ₂	Q ₃	Q ₄	Q ₅	Y = Q ₃ + Q ₅
0	0	1	0	1	0	0
1	0	0	1	0	1	1
2	1	0	0	1	0	0
3	0	1	0	0	1	1
4	1	0	1	0	0	1
5	0	1	0	1	0	0

The waveform at OR gate output, Y is [A = +5V]

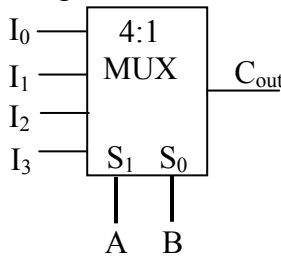


Average power

$$P = \frac{V_{Ao}^2}{R} = \frac{1}{R} \left[\lim_{T_1 \rightarrow \infty} \frac{1}{T_1} \int_0^{T_1} y^2(t) dt \right]$$

$$P = \frac{1}{RT_1} \left[\int_T^{2T} A^2 dt + \int_{3T}^{5T} A^2 dt \right] = \frac{A^2}{RT_1} [(2T - T) + (5T - 3T)] = \frac{A^2 \cdot 3T}{R(5T)} = \frac{5^2 \cdot 3}{10 \times 5} = 1.5 \text{ mw}$$

18. A 4:1 multiplexer is to be used for generating the output carry of a full adder. A and B are the bits to be added while C_{in} is the input carry and C_{out} is the output carry. A and B are to be used as the select bits with A being the more significant select bit.



Which one of the following statements correctly describes the choice of signals to be connected to the inputs I₀, I₁, I₂ and I₃ so that the output is C_{out}?

- (A) I₀ = 0, I₁ = C_{in}, I₂ = C_{in} and I₃ = 1 (B) I₀ = 1, I₁ = C_{in}, I₂ = C_{in} and I₃ = 1
 (C) I₀ = C_{in}, I₁ = 0, I₂ = 1 and I₃ = C_{in} (D) I₀ = 0, I₁ = C_{in}, I₂ = 2 and I₃ = C_{in}

18. Ans: (A)

Sol: C_{i+1} (A, B, C_i) = Σm (3, 5, 6, 7) using 4:1 max

	I ₀	I ₁	I ₂	I ₃
C _{in}	0	2	4	6
C _{in}	1	3	5	7
	0	C _{in}	C _{in}	1



19. The response of the system $G(s) = \frac{s-2}{(s+1)(s+3)}$ to the unit step input $u(t)$ is $y(t)$.

The value of $\frac{dy}{dt}$ at $t=0^+$ is _____

19. **Ans: 1**

Sol: Method 1: Given $Y(s) = \frac{(s-2)}{(s+1)(s+3)}u(s)$

$$\Rightarrow Y(s) = \frac{(s-2)}{s(s+1)(s+3)} \quad [\text{Given } u(s) = \frac{1}{s}]$$

$$L\left[\frac{dy}{dt}\right] = sY(s)$$

$$sY(s) = \frac{(s-2)}{(s+1)(s+3)}$$

$$\left.\frac{dy}{dt}\right|_{t=0^+} = \lim_{s \rightarrow \infty} \left(\frac{(s-2)}{(s+1)(s+3)} \right) = 1$$

Method: 2

$$Y(s) = \left(\frac{(s-2)}{s(s+1)(s+3)} \right) = \frac{-2}{3s} + \frac{3}{2(s+1)} - \frac{5}{6(s+3)}$$

$$y(t) = -2/3 + 3/2 e^{-t} - 5/6 e^{-3t}$$

$$\left.\frac{dy}{dt}\right|_{(t=0^+)} = 3/2(-1)e^{-t} - \frac{5}{6}(-3)e^{-3t} = -3/2 + 5/2 = 1$$

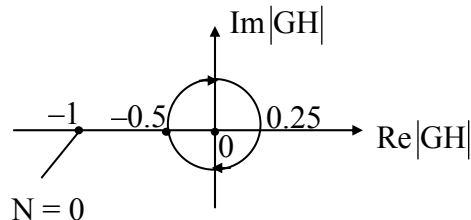
20. The number and direction of encirclements around the point $-1 + j0$ in the complex plane by the

Nyquist plot of $G(S) = \frac{1-s}{4+2s}$ is

- (A) zero (B) one, anti-clockwise (C) one, clockwise (D) two, clockwise

20. **Ans: (A)**

Sol:



Number of Encirclements about $(-1, j0)$ is Zero



21. A discrete memoryless source has an alphabet (a_1, a_2, a_3, a_4) with corresponding probabilities $(\frac{1}{2}, \frac{1}{4}, \frac{1}{8}, \frac{1}{8})$. The minimum required average codeword length in bits to represent this source for error-free reconstruction is _____

21. **Ans: 1.75**

Sol: $H = \frac{1}{2} \log_2 2 + \frac{1}{4} \log_2 4 + \frac{1}{8} \log_2 8 + \frac{1}{8} \log_2 8 \quad (\because L_{\min} = H)$
 $= 1.75 \text{ bits/ word}$

22. A speech signal is sampled at 8 kHz and encoded into PCM format using 8 bits/sample. The PCM data is transmitted through a baseband channel via 4-level PAM. The minimum bandwidth (in kHz) required for transmission is _____

22. **Ans: 16**

Sol: $R_b = 64 \text{ kbps}$
 $BW = 32 \text{ kHz}$

$$(B_T)_{\min} = \frac{R_b}{2 \log_2 M} = \frac{R_b}{2 \log_2 4} = \frac{R_b}{2 \times 2} = \frac{R_b}{4} = 16 \text{ kHz}$$

ANNOUNCES IES – 2016

(GATE Extension for IES Batch)

@ Hyderabad, Delhi, Bengaluru, Pune, Bhopal, Bhubaneswar & Vijayawada

- Ideally suitable for the students who prepared for GATE and desire to continue for IES – 2016 Preparation.
- This Coaching Program will cover conventional Questions of Technical Subjects, General Studies, English and additional Syllabus of IES.

Fee: ACE Students: ₹ 12000/- Non-ACE Students: ₹ 15000/-

Note: Admission is free for those students who are qualified in the previous written examination of ESE. Photo copies of the admit card and DAF shall be produced as proof.



23. A uniform and constant magnetic field $\vec{B} = B\hat{z}$ exists in the \hat{z} direction in vacuum. A particle of mass m with a small charge q is introduced into this region with an initial velocity $\vec{v} = v_x\hat{x} + v_z\hat{z}$. Given that B, m, q, v_x and v_z are all non-zero, which one of the following describes the eventual trajectory of the particle?
- (A) Helical motion in the \hat{z} direction (B) Circular motion in the xy plane
(C) Linear motion in the \hat{z} direction (D) Linear motion in the \hat{x} direction

23. Ans: (A)

Sol: Given $\vec{B} = B\hat{z}$

$$\vec{V} = V_x\hat{X} + V_z\hat{Z}$$

x - component of \vec{V} is perpendicular to magnetic field \vec{B} .

A charge moving perpendicular to the magnetic field experience a radial force causing circular motion shown in figure.

z - component of \vec{V} is parallel to magnetic field \vec{B} . A charge moving parallel to the field generates no force shown in figure (b).

\therefore Motion with components perpendicular and parallel to the field causes the charge to move in a helical path along $+z$ direction. Show in figure (c).

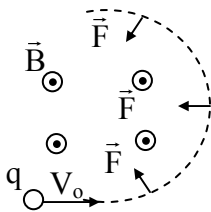


Fig (a)

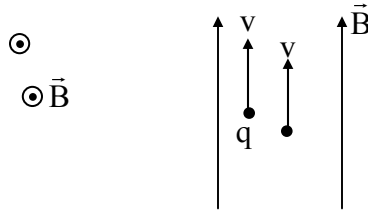


Fig (b)

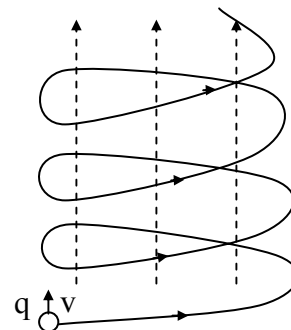


Fig (c)

24. Let the electric field vector of a plane electromagnetic wave propagating in a homogenous medium be expressed as $E = \hat{x}E_x e^{-j(\omega t - \beta z)}$, where the propagation constant β is a function of the angular frequency ω . Assume that $\beta(\omega)$ and E_x are known and are real. From the information available, which one of the following CANNOT be determined?
- (A) The type of polarization of the wave (B) The group velocity of the wave
(C) The phase velocity of the wave (D) The power flux through the $z = 0$ plane

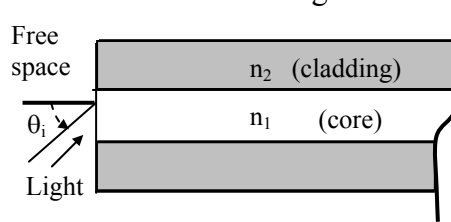
24. Ans: (D)

Sol: Given $\vec{E} = \hat{x}E_x e^{-j(\omega t - \beta z)}$

As medium properties and area of $z = 0$ plane is not given in the data, hence Average power flow (or) power flux cannot be determined.



25. Light from the free space is incident at an angle θ_i to the normal of the facet of a step-index large core optical fibre. The core and cladding refractive indices are $n_1 = 1.5$ and $n_2 = 1.4$, respectively.



The maximum value of θ_i (in degrees) for which the incident light will be guided in the core of the fibre is _____

25. Ans: 32.58

Sol: Given $n_1 = 1.5$, $n_2 = 1.4$

The maximum angle over which the incident light rays entering the fiber is called acceptance angle, θ_A .

$$\sin \theta_A = \sqrt{n_1^2 - n_2^2}$$

$$(or) \theta_A = \sin^{-1} \sqrt{n_1^2 - n_2^2} = \sin^{-1} \sqrt{1.5^2 - 1.4^2} \Rightarrow \theta_A = 32.58^\circ$$

Q. 26 – Q. 55 carry two marks each

26. The ordinary differential equation $\frac{dx}{dt} = -3x + 2$, with $x(0) = 1$ is to be solved using the forward Euler method. The largest time step that can be used to solve the equation without making the numerical solution unstable is _____

26.

Sol: $\frac{dy}{dx} = -3y + 2$, $y(0) = 1$

If $|1 - 3h| < 1$ then solution of differential equation is stable

$$\Rightarrow -1 < 1 - 3h < 1$$

$$\Rightarrow -2 < -3h < 0$$

$$\Rightarrow 0 < 3h < 2$$

$$\Rightarrow 0 < h < \frac{2}{3}$$

\therefore If $0 < h < 0.66$ then we get stable

27. Suppose C is the closed curve defined as the circle $x^2 + y^2 = 1$ with C oriented anti-clockwise. The value of $\oint_C (xy^2 dx + x^2 y dy)$ over the curve C equals _____

27. Ans: 0 (Zero)

Sol: Using Green's Theorem

$$\oint_C (xy^2 dx + x^2 y dy) = \iint_R (2xy - 2xy) dx dy = 0$$



28. Two random variables X and Y are distributed according to

$$f_{X,Y}(x, y) = \begin{cases} (x+y), & 0 \leq x \leq 1, \quad 0 \leq y \leq 1 \\ 0, & \text{otherwise.} \end{cases}$$

The probability $P(X + Y \leq 1)$ is _____

28. Ans: 0.33

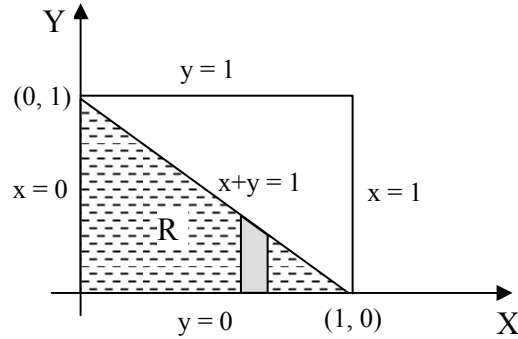
Sol: $P(X + Y \leq 1) = \int_R f(x, y) dx dy$

$$= \int_{x=0}^1 \int_{y=0}^{1-x} (x+y) dx dy$$

$$= \int_0^1 \left(xy + \frac{y^2}{2} \right)_{y=0}^{1-x} dx$$

$$= \int_0^1 \left[x(1-x) + \frac{(1-x)^2}{2} \right] dx$$

$$= 0.33$$



29. The matrix $A = \begin{bmatrix} a & 0 & 3 & 7 \\ 2 & 5 & 1 & 3 \\ 0 & 0 & 2 & 4 \\ 0 & 0 & 0 & b \end{bmatrix}$ has $\det(A) = 100$ and $\text{trace}(A) = 14$.

The value of $|a - b|$ is _____ .

29. Ans: 3

Sol: $\text{trace}(A) = 14$

$$a + b + 7 = 14$$

$$a + b = 7$$

$$\det(A) = 100$$

$$\begin{vmatrix} a & 3 & 7 \\ 0 & 2 & 4 \\ 0 & 0 & b \end{vmatrix} = 100$$

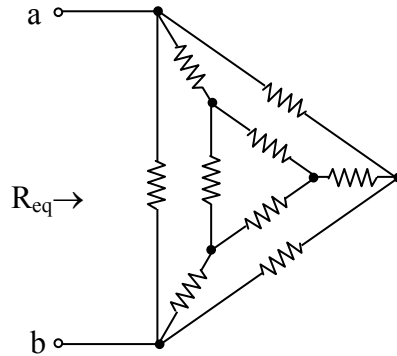
$$10 ab = 100 \Rightarrow ab = 10$$

$$\therefore a = 5, b = 2 \text{ (or) } a = 2, b = 5$$

$$\Rightarrow |a - b| = 3$$



30. In the given circuit, each resistor has a value equal to 1 Ω.



What is the equivalent resistance across the terminals a and b?

(A) 1/6 Ω

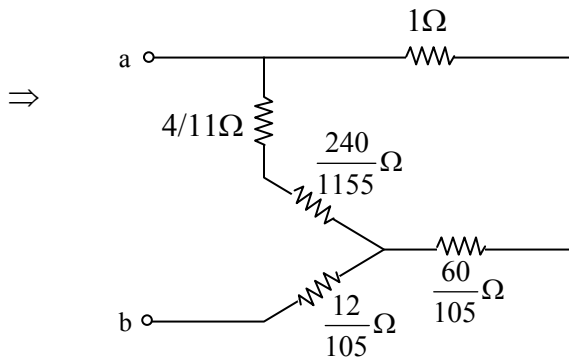
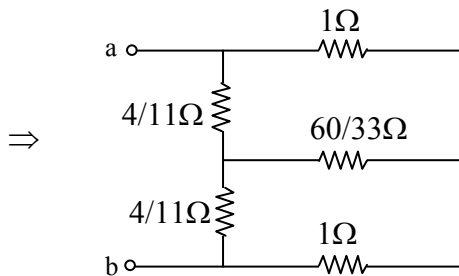
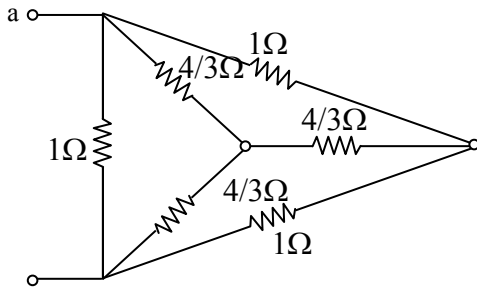
(B) 1/3 Ω

(C) 9/20 Ω

(D) 8/15 Ω

30. Ans: (D)

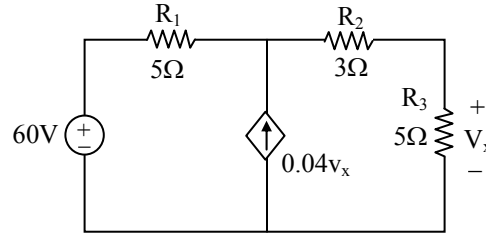
Sol:





$$\begin{aligned} \text{so, } R_{ab} &= \frac{12}{105} + \left(\frac{240}{1155} + \frac{4}{11} \right) 11 \left(1 + \frac{60}{105} \right) \\ &= 0.1143 + 0.41485 \\ &= 0.53 \Omega = \frac{8}{15} \Omega \end{aligned}$$

31. In the circuit shown in the figure, the magnitude of the current (in amperes) through R_2 is _____



31. **Ans: 5**

Sol: Nodal $\Rightarrow \frac{v-60}{5} - 0.04v_x + \frac{v}{8} = 0$

Where $v_x = \frac{5v}{8}$

$\Rightarrow v = 40v$

So, $IR_2 = I_{3\Omega} = \frac{V}{8} = \frac{40}{8} A = 5A$

32. A continuous-time filter with transfer function $H(S) = \frac{2s+6}{s^2+6s+8}$ is converted to a discrete time

filter with transfer function $G(Z) = \frac{2z^2 - 0.5032z}{z^2 - 0.5032z + k}$ so that the impulse response of the

continuous-time filter, sampled at 2 Hz, is identical at the sampling instants to the impulse response of the discrete time filter, The value of k is _____.

32. **Ans: 0.049**

Sol: $H(s) = \frac{2s+6}{s^2+6s+8} = \frac{2s+6}{(s+2)(s+4)} = \frac{1}{s+2} + \frac{1}{s+4}$

$h(t) = e^{-2t}u(t) + e^{-4t}.u(t)$

$T_s = \frac{1}{F_s} = \frac{1}{2}$

$h(nT_s) = e^{-2nT_s}u(nT_s) + e^{-4nT_s}.u(nT_s)$
 $= e^{-n}u(n) + e^{-2n}.u(n)$

$H(z) = \frac{z}{z-e^{-1}} + \frac{z}{z-e^{-2}} = \frac{z}{z-0.367} + \frac{z}{z-0.135}$



$$H(z) = \frac{z^2 - 0.135z + z^2 - 0.367z}{z^2 - 0.5032z + 0.049}$$

$$= \frac{2z^2 - 0.5032z}{z^2 - 0.5032z + 0.049}$$

$$k = 0.049$$

33. The Discrete Fourier Transform (DFT) of the 4-point sequence

$$X[n] = \{x[0], x[1], x[2], x[3]\} = \{3, 2, 3, 4\} \text{ is}$$

$$X[k] = \{X[0], X[1], X[2], X[3]\} = \{12, 2j, 0, -2j\}$$

If $X_1[k]$ is the DFT of the 12-point sequence $x_1[n] = \{3, 0, 0, 2, 0, 0, 3, 0, 0, 4, 0, 0\}$,

The value of $\left| \frac{x_1[8]}{X_1[11]} \right|$ is _____

33. Ans: 6

Sol: Interpolation in time domain equal to replication in frequency domain.

$$x_1(n) = x\left(\frac{n}{3}\right)$$

$$X_1(k) = [12, 2j, 0, -2j, 12, 2j, 0, -2j, 12, 2j, 0, -2j]$$

$$X_1(8) = 12, X_1(11) = -2j$$

$$\left| \frac{X_1(8)}{X_1(11)} \right| = \left| \frac{12}{-2j} \right| = 6$$

NEW BATCHES START @ HYDERABAD

IES | GATE | PSUs - 2017

- Morning Batches Starts from 22nd Feb, 2016
- Regular and Spark Batches Starts from 26th May, 2016
- Evening Batches Starts from 2nd week of May 2016

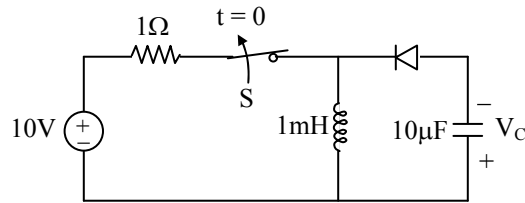
GATE | PSUs - 2017

- Weekend Batches Starts from 20th February, 2016
- Morning Batches Starts from 22nd Feb, 2016
- Short-term Summer Batches Starts from 22nd April, 2016
- Regular Batch Starts from 29th April, 2016
- Spark Batches Starts from 26th May, 2016
- Evening Batches Starts from 2nd week of May 2016

For more details of upcoming batches at all our centers
Please visit: www.aceenggacademy.com



34. The switch S in the circuit shown has been closed for a long time. It is opened at time $t = 0$ and remains open after that. Assume that the diode has zero reverse current and zero forward voltage drop.



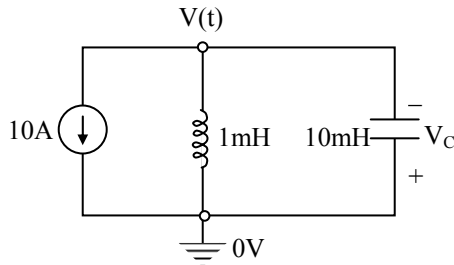
The steady state magnitude of the capacitor voltage V_C (in volts) is _____

34. Ans: 100

Sol: $i_L(0^-) = \frac{10}{1} = 10A = i_L(0^+)$

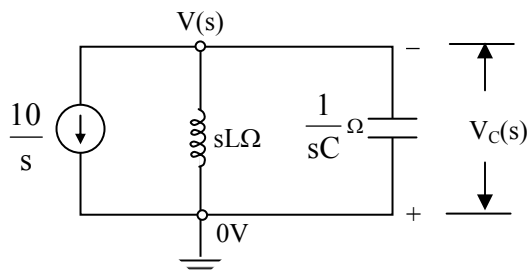
$v_c(0^-) = 0V = v_c(0^+)$

For diode, $R_r = \infty\Omega$ and $R_f = 0\Omega$ (given)



For $t \geq 0$

Transform the above network in Laplace domain



$$\text{Nodal} \Rightarrow \frac{10}{s} + \frac{v(s)}{sL} + \frac{v(s)}{\frac{1}{sC}} = 0$$

$$\Rightarrow v(s) = \frac{-10L}{s^2LC + 1}$$

$$= v(s) = -10L \cdot \frac{1}{\sqrt{LC}} \cdot \frac{\sqrt{LC}}{s^2 + \frac{1}{LC}}$$



$$= -10\sqrt{\frac{L}{C}} \cdot \frac{\omega_n}{s^2 + \omega_n^2} \quad \text{where } \omega_n^2 = \frac{1}{LC}$$

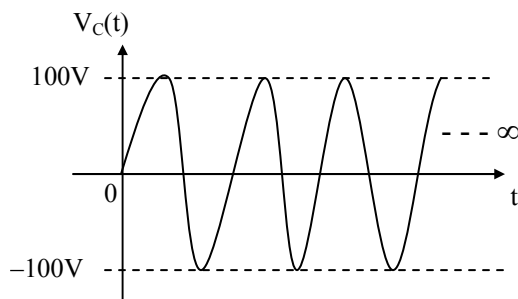
$$\Rightarrow v(t) = -10\sqrt{\frac{L}{C}} \sin \omega_n t \quad \text{for } 0 \leq t \leq \infty$$

Where $\omega_n = \frac{1}{\sqrt{LC}}$ rad/sec

$$\Rightarrow v(t) = -100 \sin 10^4 t \quad \text{for } 0 \leq t \leq \infty$$

By KVL $\Rightarrow v(t) + v_c(t) = 0$

$$\begin{aligned} \Rightarrow v_c(t) &= -v(t) \\ &= 100 \sin(10000t) \text{ V for } 0 \leq t \leq \infty \end{aligned}$$



So, $v_c = 100 \angle -90^\circ$

$$\Rightarrow |v_c| = 100 \text{ v}$$

35. A voltage V_G is applied across a MOS capacitor with metal gate and p-type silicon substrate at $T = 300 \text{ K}$. The inversion carrier density (in number of carriers per unit area) for $V_G = 0.8 \text{ V}$ is $2 \times 10^{11} \text{ cm}^{-2}$. For $V_G = 1.3 \text{ V}$, the inversion carrier density is $4 \times 10^{11} \text{ cm}^{-2}$. What is the value of the inversion carrier density for $V_G = 1.8 \text{ V}$?

(A) $4.5 \times 10^{11} \text{ cm}^{-2}$ (B) $6.0 \times 10^{11} \text{ cm}^{-2}$ (C) $7.2 \times 10^{11} \text{ cm}^{-2}$ (D) $8.4 \times 10^{11} \text{ cm}^{-2}$

35. **Ans: (B)**

36. Consider avalanche breakdown in a silicon p^+n junction. The n-region is uniformly doped with a donor density N_D . Assume that breakdown occurs when the magnitude of the electric field at any point in the device becomes equal to the critical field E_{crit} . Assume E_{crit} to be independent of N_D . If the built-in voltage of the p^+n junction is much smaller than the breakdown voltage, V_{BR} , the relationship between V_{BR} and N_D is given by

(A) $V_{\text{BR}} \times \sqrt{N_D} = \text{constant}$

(B) $N_D \times \sqrt{V_{\text{BR}}} = \text{constant}$

(C) $N_D \times V_{\text{BR}} = \text{constant}$

(D) $N_D / V_{\text{BR}} = \text{constant}$

36. **Ans: (C)**

Sol: $V_0 + V_{\text{BR}} = \frac{\epsilon E_{\text{CRIT}}^2}{2q} \left[\frac{1}{N_D} + \frac{1}{N_A} \right]$

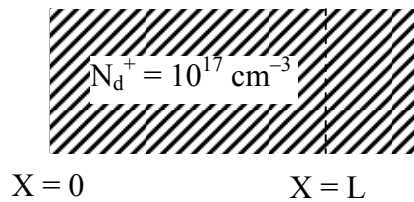


$$\left[P + N \rightarrow N_A \gg N_D \rightarrow \frac{1}{N_A} \ll \frac{1}{N_D} \right]$$

$$V_{BR} \cdot N_D = \text{CONSTANT}$$

$$\therefore E_{CRIT} \text{ is CONSTANT}$$

37. Consider a region of silicon devoid of electrons and holes, with an ionized donor density of $N_d^+ = 10^{17} \text{ cm}^{-3}$. The electric field at $x = 0$ is 0 V/cm and the electric field at $x = L$ is 50 kV/cm in the positive x direction. Assume that the electric field is zero in the y and z directions at all points.



Given $q = 1.6 \times 10^{-19}$ coulomb, $\epsilon_0 = 8.85 \times 10^{-14}$ F/cm, $\epsilon_r = 11.7$ for silicon, the value of L in nm is _____.

37. **Ans: [32.358 nm]**

Sol: $E = \frac{eN_D}{\epsilon} x \Rightarrow \frac{dE}{dx} = \frac{eN_D}{\epsilon}$

$$= \left[\frac{50 \text{ kV/cm} - 0}{L - 0} \right] = \frac{1.6 \times 10^{-19} \times 10^{17}}{11.7 \times 8.85 \times 10^{-14}}$$

$$\Rightarrow L = 3.2358 \times 10^{-6} \text{ cm}$$

$$= 3.2358 \times 10^{-8} \text{ m}$$

$$= 32.358 \times 10^{-9} \text{ m}$$

$$= 32.358 \text{ nm}$$

38. Consider a long-channel NMOS transistor with source and body connected together. Assume that the electron mobility is independent of V_{GS} and V_{DS} . Given,

$$g_m = 0.5 \mu\text{A/V for } V_{DS} = 50 \text{ mV and } V_{GS} = 2 \text{ V,}$$

$$g_d = 8 \mu\text{A/V for } V_{GS} = 2 \text{ V and } V_{DS} = 0 \text{ V,}$$

$$\text{Where } g_m = \frac{\partial I_D}{\partial V_{GS}} \text{ and } g_d = \frac{\partial I_D}{\partial V_{DS}}$$

The threshold voltage (in volts) of the transistor is

38. **Ans: 1.2 Volts**

Sol: $I_o = \mu_n c_{ox} \frac{W}{L} \left[(V_{gs} - V_T) V_{DS} - \frac{1}{2} V_{DS}^2 \right]$

$$g_m = \frac{dI_D}{dV_{gs}} = \mu_n C_{ox} \frac{W}{L} \cdot V_{DS}$$



$$\Rightarrow \mu_n C_{ox} \frac{W}{L} = \frac{g_m}{V_{DS}} = \frac{0.5 \times 10^{-6}}{50 \times 10^{-3}} = 10 \times 10^{-6}$$

$$g_d = \frac{dI_D}{dV_{DS}} = \mu_n C_{ox} \frac{W}{L} [V_{gs} - V_T]$$

$$8 \times 10^{-6} = 10 \times 10^{-6} [V_{gs} - V_T]$$

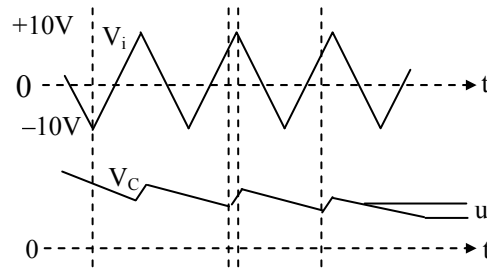
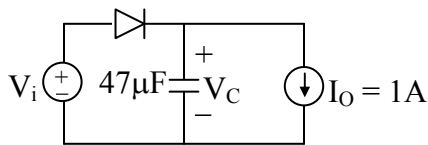
$$V_{gs} - V_T = \frac{8 \times 10^{-6}}{10 \times 10^{-6}}$$

$$\Rightarrow V_T = V_{gs} - 0.8$$

$$V_T = 2V - 0.8V = 1.2V$$

$$V_T = 1.2V$$

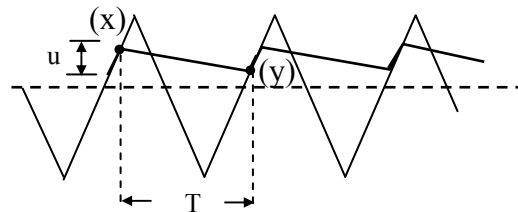
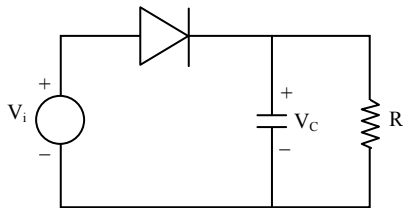
39. The figure shows a half-wave rectifier with a $475 \mu F$ filter capacitor. The load draws a constant current $I_0 = 1 A$ from the rectifier. The figure also shows the input voltage V_i , the output voltage V_C and the peak-to-peak voltage ripple u on V_C . The input voltage V_i is a triangle-wave with an amplitude of $10 V$ and a period of $1 ms$.



The value of the ripple u (in volts) is _____.

39. Ans: 2.1V

Sol:



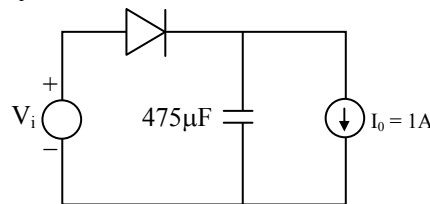
$$u = (V_{i\text{peak}} - V_D) - (V_{i\text{peak}} - V_D) \left[1 - \frac{T}{RC} \right]$$

Peak to peak Amplitude of ripple

$$u = \frac{V_{i\text{peak}} - V_D}{RC} \cdot T$$

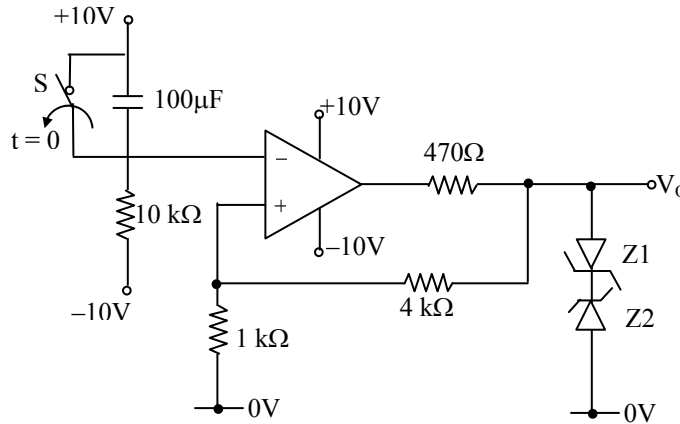
If the load is represented by a constant current source $\frac{V_{i\text{peak}} - V_D}{R} = I_0$

$$\therefore u = \frac{I_0 \cdot T}{C} = \frac{1A \cdot (1m)}{475\mu F} = 2.1V$$





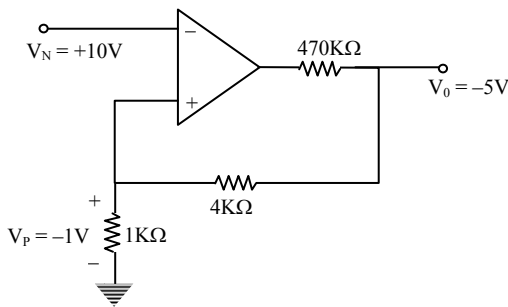
40. In the opamp circuit shown, the Zener diodes Z1 and Z2 clamp the output voltage V_O to +5 V or -5 V. The switch S is initially closed and is opened at time $t = 0$



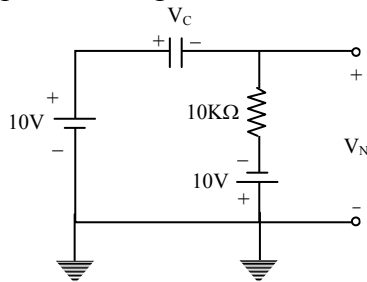
The time $t = t_1$ (in seconds) at which V_O changes state is _____.

40. Ans: 0.798 sec

Sol: At $t = 0^-$



The output V_O changes state when $V_N = 1V$ for $t \geq 0$



$$V_C(t) = [V_C(0) - V_C(\infty)]e^{-t/RC} + V_C(\infty) = [0 - 20]e^{-t/10^4, 10^{-4}} + 20 = 20 - 20e^{-t}$$

$$V_N = 10 - V_C = 10 - [20 - 20e^{-t}] = -10 + 20e^{-t}$$

For op-amp to change state

$$V_N = V_P$$

$$-10 + 20e^{-t} = -1$$

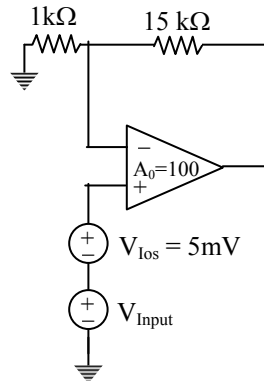
$$20e^{-t} = 9$$

$$-t = \ln\left[\frac{9}{20}\right]$$

$$\rightarrow t = 0.798\text{sec}$$



41. An opamp has a finite open loop voltage gain of 100. Its input offset voltage V_{ios} ($= +5\text{mV}$) is modeled as shown in the circuit below. The amplifier is ideal in all other respects. V_{input} is 25 mV.



The output voltage (in millivolts) is _____.

41. **Ans: 413.79**

Sol:
$$V_0 = \left[\frac{A}{1 + A\beta} \right] [V_{ios} + V_{input}]$$

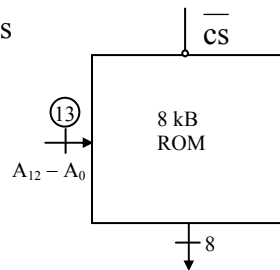
$$V_0 = \frac{100}{1 + 100 \left[\frac{1k}{15k + 1k} \right]} [25\text{mV} + 5\text{mV}] = \frac{1600}{116} [30\text{mV}] = 413.79\text{mV}$$

42. An 8 Kbyte ROM with an active low Chip Select input (\overline{CS}) is to be used in an 8085 microprocessor based system. The ROM should occupy the address range 1000H to 2FFFH. The address lines are designated as A_{15} to A_0 , where A_{15} is the most significant address bit. Which one of the following logic expression will generate the correct \overline{CS} signal for this ROM?

- (A) $\overline{A_{15}} + \overline{A_{14}} + (\overline{A_{13}} \cdot \overline{A_{12}} + \overline{A_{13}} \cdot \overline{A_{12}})$ (B) $\overline{A_{15}} \cdot \overline{A_{14}} \cdot (\overline{A_{13}} + \overline{A_{12}})$
 (C) $\overline{A_{15}} \cdot \overline{A_{14}} \cdot (\overline{A_{13}} \cdot \overline{A_{12}} + \overline{A_{13}} \cdot \overline{A_{12}})$ (D) $\overline{A_{15}} + \overline{A_{14}} + \overline{A_{13}} \cdot \overline{A_{12}}$

42. **Ans: (A)**

Sol: Address Range given is



	A_{15}	A_{14}	A_{13}	A_{12}	A_{11}	A_{10}	A_9	A_8	A_7	A_6	A_5	A_4	A_3	A_2	A_1	A_0
1000H →	0	0	0	1	0	0	0	0	0	0	0	0	0	0	0	0
2FFFH →	0	0	1	0	1	1	1	1	1	1	1	1	1	1	1	1

To provide \overline{CS} as low, The condition is

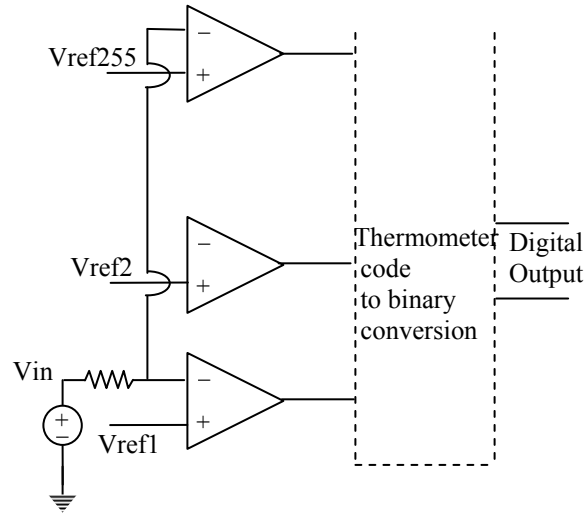
$A_{15} = A_{14} = 0$ and $A_{13} A_{12} = 01$ (or) (10)

i.e $A_{15} = A_{14} = 0$ and $A_{13} A_{12}$ shouldn't be 00, 11.

Thus it is $\overline{A_{15}} + \overline{A_{14}} + [\overline{A_{13}} \cdot \overline{A_{12}} + \overline{A_{13}} \cdot \overline{A_{12}}]$



43. In an N bit flash ADC, the analog voltage is fed simultaneously to $2^N - 1$ comparators. The output of the comparators is then encoded to a binary format using digital circuit. Assume that the analog voltage source V_{in} (whose output is being converted to digital format) has a source resistance of 75Ω as shown in the circuit diagram below and the input capacitance of each comparator is 8 pF . The input must settle to an accuracy of $\frac{1}{2}$ LSB even for a full scale input change for proper conversion. Assume that the time taken by the thermometer to binary encoder is negligible.



If the flash ADC has 8 bit resolution, which one of the following alternatives is closest to the maximum sampling rate?

- (A) 1 megasamples per second
- (B) 6 megasamples per second
- (C) 64 megasamples per second
- (D) 256 megasamples per second

43. **Ans: (B)**

Sol:

$$V_{in}^1 = \frac{V_{in}}{RC_{eq}} T$$

V_{in}^1 has to settle down within $\frac{1}{2}$ LSB of full scale value.

$$\text{i.e. } \frac{509}{510} V_{in} = \frac{V_{in} T}{75 \times (255 \times 8 \times 10^{-12})} \Rightarrow T = (75 \times 255 \times 8 \times 10^{-12}) \times \frac{509}{510}$$

$$T \approx 0.15 \mu\text{sec}$$

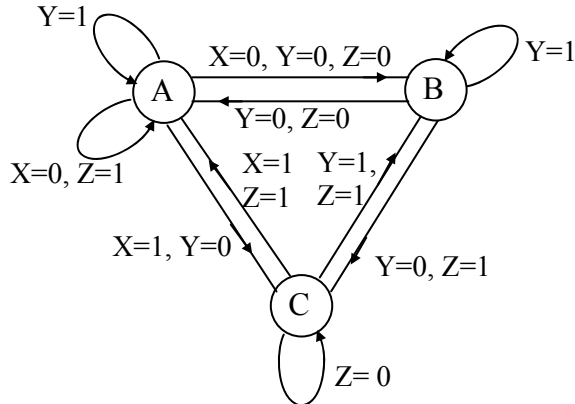
Thus sample period $T_s \geq T$

$$T_s \geq 0.15 \text{ m sec}$$

$$f_{s, \text{max}} = \frac{1}{T_{s, \text{min}}} = \frac{1}{0.15 \times 10^{-6}} \text{ Hz} \approx 6 \text{ Megasamples}$$



44. The state transition diagram for a finite state machine with states A, B and C, and binary input X, Y and Z, is shown in the figure.



Which one of the following statements is correct?

- (A) Transitions from State A are ambiguously defined
- (B) Transition from State B are ambiguously defined
- (C) Transitions from State C are ambiguously defined
- (D) All of the state transitions are defined unambiguously.

44. **Ans: (C)**

Sol: In state (C), when XYZ = 111, then Ambiguity occurs
Because, from state (C) \Rightarrow When X = 1, Z = 1 \Rightarrow N.S is (A)
When Y = 1, Z = 1 \Rightarrow N.S is (B)

IES (ESE)-2016 CLASSROOM OFFLINE & ONLINE TEST SERIES STARTS FROM 12th MARCH 2016 AT ALL OUR CENTERS

FEES

TYPE OF STUDENTS	OFFLINE	ONLINE
FOR PRESENT STUDENTS OF ACE	NIL	₹ 200
FOR PREVIOUS STUDENTS OF ACE	₹ 1500	₹ 750
FOR STUDENTS OTHER THAN ACE	₹ 3000	₹ 1500
FOR IIT/IIIT/NIT/BIT/BITS STUDENTS	₹ 500	₹ 500
IES WRITTEN QUALIFIED STUDENTS	NIL	NIL

* VIDEO SOLUTIONS ARE AVAILABLE FOR TYPICAL QUESTIONS FOR ONLINE EXAMS.

NUMBER OF PAPERS - 36

Objective Tests	08
Conventional Tests	08
Revision Tests (08 papers)	04
General Ability Tests	02
Full Length Mock Test Series (10 Papers) Similar to UPSC Pattern	02

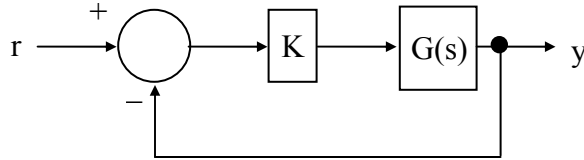
NOTE

For online Registered students, if evaluation of conventional papers is required, additional fee of ₹ 500/-
The student has to scan and upload the answer sheets giving all details at : aceonlineexams@gmail.com



45. In the feedback system shown below $G(S) = \frac{1}{(s^2 + 2s)}$.

The step response of the closed-loop system should have minimum setting time and have no overshoot.



The required value of gain k to achieve this is _____

45. **Ans: 1**

Sol: Given $G(s) = \frac{1}{(s^2 + 2s)}$

From Diagram CE $\Rightarrow 1 + KG(s) = 0$

$$s^2 + 2s + K = 0$$

Minimum Settling Time is obtain. For Critical Damped System For Critical Damped System ($\xi = 1$) the % $m_p = 0\%$

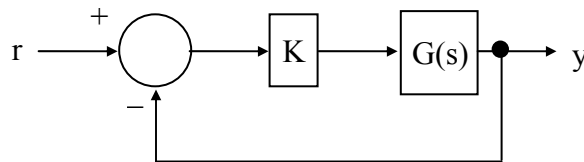
$$2\xi\omega_n = 2$$

$$2 \times 1 \times \omega_n = 2$$

$$\omega_n = 1 \text{ rad/sec}$$

$$K = 1$$

46. In the feedback system shown below $G(S) = \frac{1}{(s+1)(s+2)(s+3)}$



The positive value of k for which the gain margin of the loop is exactly 0 dB and the phase margin of the loop is exactly zero degree is _____

46. **Ans: 60**

Sol: Given Forward path TF = $\frac{1}{(s+1)(s+2)(s+3)}$

Given GM = 0dB, PM = 0° That Means Given System is Marginal Stable

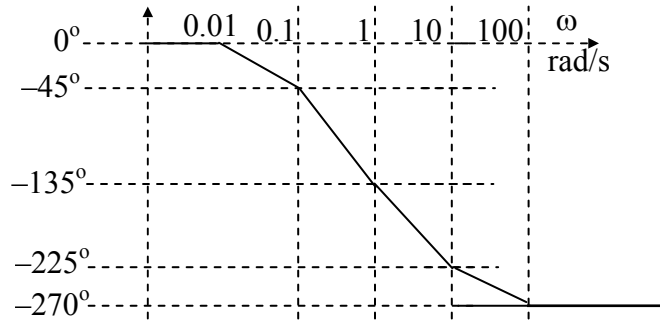
$$1 + KG(s) = 0 \Rightarrow \text{CE} = s^3 + 11s^2 + 6s + 6 + K = 0$$

$$\begin{array}{l|ll} S^3 & 1 & 6 \\ S^2 & 11 & 6+K \\ S^1 & \left(\frac{66-6-K}{11}\right) & =0 \\ S^0 & (6+K) & \end{array}$$

$$\Rightarrow K = 60 \text{ For Marginal Stable}$$



47. The asymptotic Bode phase plot of $G(S) = \frac{k}{(s + 0.1)(s + 10)(s + p_1)}$, with k and p_1 both positive, is shown below.



The value of p_1 is _____

47. **Ans: 1**

Sol: From the Bode Diagram at $\omega = 1$, the phase Angle is -135°

$$-135^\circ |_{\omega=1} = -\tan^{-1}\left(\frac{\omega}{0.1}\right) - \tan^{-1}\left(\frac{\omega}{10}\right) - \tan^{-1}\left(\frac{\omega}{p_1}\right)$$

$$-135^\circ = -\tan^{-1}\left(\frac{1}{0.1}\right) - \tan^{-1}\left(\frac{1}{10}\right) - \tan^{-1}\left(\frac{1}{p_1}\right)$$

$$-135^\circ = -84.28 - 5.71 - \tan^{-1}\left(\frac{1}{p_1}\right)$$

$$45^\circ = \tan^{-1}\left(\frac{1}{p_1}\right) \Rightarrow 1 = \frac{1}{p_1} \Rightarrow p_1 = 1$$

48. An information source generates a binary sequence $\{\alpha_n\}$. α_n can take one of the two possible values -1 and $+1$ with equal probability and are statistically independent and identically distributed. This sequence is pre-coded to obtain another sequence $\{\beta_n\}$, as $\beta_n = \alpha_n + k \alpha_{n-3}$. The sequence $\{\beta_n\}$ is used to modulate a pulse $g(t)$ to generate the baseband signal

$$X(t) = \sum_{n=-\infty}^{\infty} \beta_n g(t - nT), \text{ where } g(t) = \begin{cases} 1, & 0 \leq t \leq T \\ 0 & \text{otherwise} \end{cases}$$

If there is a null at $f = \frac{1}{3T}$ in the power spectral density of $X(t)$, then k is _____

48. **Ans: -1**

Sol: The PSD of $X(t) = S_X(f)$

$$S_X(f) = \frac{|G(f)|^2}{T} \left(\sum_{m=-\infty}^{\infty} R_b(\tau) e^{j2\pi f \tau} \right)$$

$$\begin{aligned} R_b(\tau) &= E[\beta_n B_{n-\tau}] = E[(\alpha_n + k\alpha_{n-3})(\alpha_{n-\tau} + k\alpha_{n-\tau-3})] = E[\alpha_n \alpha_{n-\tau} + k\alpha_n \alpha_{n-\tau-3} + k\alpha_{n-3} \alpha_{n-\tau} + k^2 \alpha_{n-3} \alpha_{n-\tau-3}] \\ &= E[\alpha_n \alpha_{n-\tau}] + kE[\alpha_n \alpha_{n-\tau-3}] + kE[\alpha_{n-3} \alpha_{n-\tau}] + k^2 E[\alpha_{n-3} \alpha_{n-\tau-3}] \\ &= E[\alpha_n \alpha_{n-\tau}] + kE[\alpha_n \alpha_{n-\tau-3}] + kE[\alpha_{n-3} \alpha_{n-\tau-3}] + k^2 E[\alpha_{n-3} \alpha_{n-\tau-3}] \\ &= R(\tau) + kR(\tau+3) + kR(\tau-3) + k^2 R(\tau) = (1+k^2)R(\tau) + kR(\tau+3) + kR(\tau-3) \end{aligned}$$



The Auto correlation function is

$$R_b(\tau) = \begin{cases} 1+k^2 & \tau = 0 \\ k & \tau = \pm 3 \\ 0 & \text{otherwise} \end{cases}$$

Power spectral density

$$S_b(f) = 1 + k^2 + 2k \cos(2\pi f 3T)$$

$$\text{Null will occur at } f = \frac{1}{3T}$$

$$\text{So at } f = \frac{1}{3T} \Rightarrow S_b(f) = 1 + k^2 + 2k \cos 2\pi \left(\frac{1}{3T} \right) \times 3T = 0$$

$$\Rightarrow 1 + k^2 + 2k = 0 \Rightarrow (k + 1)^2 = 0 \Rightarrow k = -1$$

49. An ideal band-pass channel 500 Hz-2000 Hz is deployed for communication. A modem is designed to transmit bits at the rate of 4800 bits/s using 16-QAM. The roll-off factor of a pulse with a raised cosine spectrum that utilizes the entire frequency band is _____

49. Ans: 0.25

Sol: $B_w = 1500 \text{ Hz}$

$$\frac{R_b [1 + \alpha]}{\log_2^{16}} = 1500 \text{ Hz}$$

$$\Rightarrow R_b [1 + \alpha] = 1500 \times 4 = 6000 \Rightarrow (1 + \alpha) = \frac{6000}{4800}$$

$$\Rightarrow \alpha = \frac{6000}{4800} - 1 = 0.25$$

50. Consider random process $X(t) = 3V(t) - 8$, where $V(t)$ is a zero mean stationary random process with autocorrelation $R_v(\tau) = 4e^{-5|\tau|}$. The power of $X(t)$ is _____

50. Ans: 100 W

$$\text{Sol: } E[X^2(t)] = E[(3V(t) - 8)^2] = E[9V^2(t) + 64 - 2 \times 3V(t) \times 8]$$

$$= E[9V^2(t) + 64 - 48V(t)] = 9E[V^2(t)] + E[64] - 48E[V(t)]$$

$$\because [E[V(t)] = 0, E[V^2(t)] = MS = R(0) = 4e^{-5(0)} = 4, E[\text{constant}] = \text{constant}]$$

$$E[X^2(t)] = 9 \times 4 + 64 = 36 + 64 = 100$$

51. A binary communication system makes use of the symbols “zero” and “one”. There are channel errors. Consider the following events:

x_0 : a “zero” is transmitted

x_1 : a “one” is transmitted

y_0 : a “zero” is received

y_1 : a “one” is received

The following probabilities are given: $P(x_0) = \frac{1}{2}$, $P(y_0 | x_0) = \frac{3}{4}$, and $P(y_0 | x_1) = \frac{1}{2}$. The

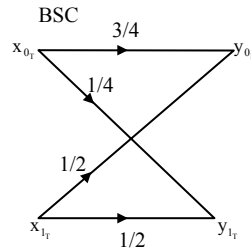
information in bits that you obtain when you learn which symbol has been received (while you know that a “zero” has been transmitted) is _____



51. Ans: 0.4056

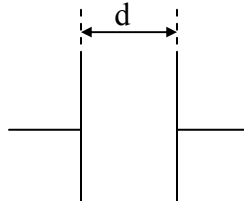
Sol:

$$P(y/x) \begin{array}{c|cc} & y_0 & y_1 \\ \hline x_0 & 3/4 & 1/4 \\ \hline x_1 & 1/2 & 1/2 \end{array}$$

$$P(xy) \begin{array}{c|cc} & y_0 & y_1 \\ \hline x_0 & 3/8 & 1/8 \\ \hline x_1 & 1/4 & 1/4 \end{array}$$


$$\begin{aligned} H(y/x_0) &= P(x_0 y_0) \log_2 \left(\frac{1}{P(y_0/x_0)} \right) + P(x_0 y_1) \log_2 \left(\frac{1}{P(y_1/x_0)} \right) \\ &= -P(x_0 y_0) \cdot \log_2 P(y_0/x_0) - P(x_0 y_1) \cdot \log_2 P(y_1/x_0) \\ &= -\frac{3}{8} \log_2 \frac{3}{4} - \frac{1}{8} \log_2 \frac{1}{4} = 0.4056 \end{aligned}$$

52. The parallel-plate capacitor shown in the figure has movable plates. The capacitor is charged so that the energy stored in it is E when the plate separation is d . The capacitor is then isolated electrically and the plates are moved such that the plate separation become $2d$.



At this new plate separation, what is the energy stored in the capacitor, neglecting fringing effects?

- (A) $2E$ (B) $\sqrt{2} E$ (C) E (D) $E/2$

52. Ans: (A)

Sol: Energy stored when spacing is d is given by

Energy stored = Energy density \times volume

$$E_1 = Ed \times V_1$$

$$V_1 = d_1 A = dA$$

When spacing between the plates is doubled, $d_2 = 2d$

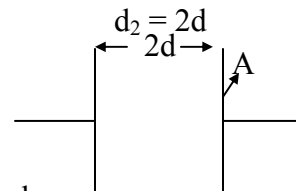
Then, $V_2 = d_2 A = 2dA$

$$E_2 = Ed \times 2dA$$

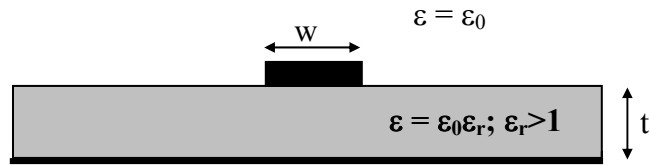
$$= 2Ed (dA)$$

$$E_2 = 2E_1$$

There with the modified capacitor energy stored is doubled.



53. A lossless microstrip transmission line consists of a trace of width w . It is drawn over a practically infinite ground plane and is separated by a dielectric slab of thickness t and relative permittivity $\epsilon_r > 1$. The inductance per unit length and the characteristic impedance of this line are L and Z_0 , respectively.

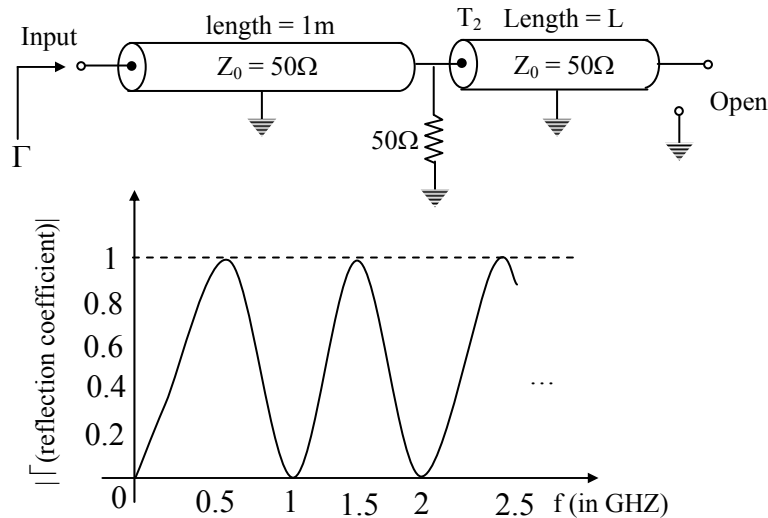


Which one of the following inequalities is always satisfied?

- (A) $Z_o > \sqrt{\frac{Lt}{\epsilon_0 \epsilon_r w}}$ (B) $Z_o < \sqrt{\frac{Lt}{\epsilon_0 \epsilon_r w}}$ (C) $Z_o > \sqrt{\frac{Lw}{\epsilon_0 \epsilon_r t}}$ (D) $Z_o < \sqrt{\frac{Lw}{\epsilon_0 \epsilon_r t}}$

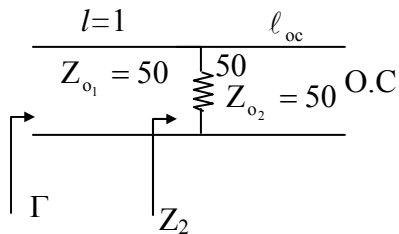
53. Ans: (A)

54. A microwave circuit consisting of lossless transmission lines T_1 and T_2 is shown in the figure. The plot shows the magnitude of the input reflection coefficient Γ as a function of frequency f . The phase velocity of the signal in transmission lines is 2×10^8 m/s.



54. Ans: 0.1

Sol:



$$Z_L = 50 \parallel -j 50 \cot \beta \ell_{oc}$$

$$|\Gamma| = \left| \frac{Z_L - Z_{01}}{Z_L + Z_0} \right| = 0 \text{ only when } Z_L = Z_{01}$$

$$50 \parallel -j 50 \cot \beta \ell_{oc} = 50$$



This satisfied only when $-j 50 \cot \beta l_{oc} = \infty$

$$\text{i.e., } \beta l_{oc} = m\pi$$

$$\frac{2\pi}{\lambda} l_{oc} = m\pi$$

$$l_{oc} = \frac{m\lambda}{2}$$

$$l_{oc} = \frac{mv}{2f}$$

$$= \frac{m \times 2 \times 10^8}{2 \times f \times 10^9} \quad [\because f \text{ in GHZ, Here } f = 0, 1, 2, 3, \dots \text{ GHZ}]$$

$$l_{oc} = \frac{m}{10f}$$

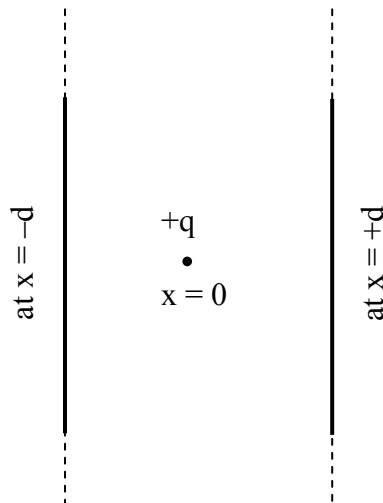
$f = 1\text{GHz}$ (Here $f = 1\text{ GHz}$ $m = 1$ for minimum length l_{oc})

$$l_{oc} = \frac{m}{10}$$

$$l_{oc} = \frac{1}{10} \quad [\text{for } m = 1]$$

$$L_{oc} = 0.1$$

55. A positive charge q is placed at $x = 0$ between two infinite metal plates placed at $x = -d$ and at $x = +d$ respectively. The metal plates lie in the yz plane.



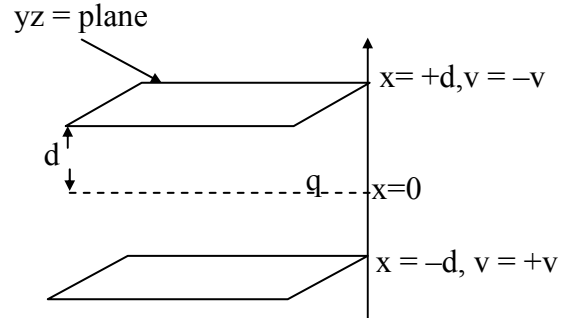
The charge is at rest at $t = 0$, when a voltage $+V$ is applied to the plate at $-d$ and voltage $-V$ is applied to the plate at $x = +d$. Assume that the quantity of the charge q is small enough that it does not perturb the field set up by the metal plates. The time that the charge q takes to reach the right plate is proportional to

- (A) d/V (B) \sqrt{d}/V (C) d/\sqrt{V} (D) \sqrt{d}/V



55. Ans: (C)

Sol:



Fig

When there is no external field,
Charge at rest having potential energy only

$$P.E = qv$$

By an application of an external field, charge carriers acquire some kinetic energy, with velocity V .

$$qv = \frac{1}{2} mv^2$$

$$V = \sqrt{\frac{2eV}{m}}$$

Time taken to reach $x = d$ plate is known as t_{tr} 'Gap transit' time

$$t_g = \frac{d}{v} = \frac{d}{\sqrt{\frac{2eV}{m}}}$$

$$\therefore t_d \propto \frac{d}{\sqrt{V}}$$